



Beneteau Oceanis 43

Year imm:
2008

Length:
13.13 mt

Max speed:
8.0 knots

Tonnage:
0.00

Draft:
2.00 mt

Flag:
Italiana

Construction's year:
2008

Beam:
4.12 mt

Croc speed:
6.0 knots

Displacement:
8875 Kg

SCAD. Rina:

Visible:
Liguria (Italy)

Price: **119 000 €**
brokerage commissions not included

Short description

Interior design nauta-Spanker-teak deck with cockpit, benches and teak luxury version-the icebox and refrigerator in cockpit-white hull-spray hood and bimini top-external shower mixed-bathing ladder-full optional-bow thruster max power-tender, 2 hp motor delta anchor, chain of 30 10 50 mt + mt textile-contametricatena quick silver-again-heating webasto 2015-very well equipped -

Materials

Hull:
VTR

Deck house:
VTR

Deck:
VTR + teak

Idraulics

Tanks:
2

Material:
INOX

Capacity:
360 liters

Boiler:
Yes 220+MOTORE

Autoclaves:
Yes

Dessalator:
No

Electrics

Voltage:
12/220

Charge batt.:
Yes

Batteries:
3

Capacity:
300

Gen. 220:
No

Power:
Not indicated

Inverter:
No

Fuels and engines

Engines:
1

Power:
54 HP D

Brand:
YANMAR

Model:
4JH4

Trasmission:
Axis line

Engine hours:
337

Tanks:
1

Capacity:
200 liters

Material:
INOX

Propeller:
Not indicated

Revision:
Not indicated

Cabins & Lodging

Cabin of ship-owner

Cabin guests

2

3 Cabins

Entertainment

HI-FI

General description

Designer

nauta

Depth Sounder

GPS-Plotter

Gauge of bar

Autopilot

Radar

Wind Instruments

yes

Electric windlass

Vhf

Equipment

Bimini Top

Outside shower

Bowthruster

Heating

webasto 2015

Anchor windlass

Swimming ladder

Table in the cockpit

Sail equipment

Main sail

battened

Cover sheet

Mainsail cover

Other

Tender

Teak Cockpit

Interiors

Polished cherry interior-large dinette convertible into double bed with L-shaped sofa, cream-coloured wooden table in the Middle-small sofa and contrasted 3 cabins-2 services-full kitchen with stove, fridge and microwave -

Equipment

Spi asimetrico-kit equipment mooring-windlass-50 water reservoir windex-litres fore and aft foul water systems-complete safety equipment for 10 people-Spanker-teak deck with cockpit benches and teak luxury version-the icebox and refrigerator in cockpit-spray hood and bimini top-external shower mixed-bathing ladder-bow thruster max power-tender motor 2 hp delta anchor 30 10 50 mt + mt textile chain-contametricatena quick silver-again-webasto heating 2017-2018-Works very well equipped-electric windlass with a Gypsy and 50 m chain + top 30 new Bell-m new-increased frame in new steel for-bimini canvas back-side zipper attached to sump-hatch covers sunshades bimini-suede lining new rudder-bathing ladder new teak and steel-220 new Jack-sea cocks all new-shrouds and stay cables replaced (new)-adding second bilge pump with alarm-replaced masthead wind station-replaced in TV antenna mast-aft bathroom shower faucets changed-changed all the mirrors of the baths bow and stern- replaced all batteries (5 all-new)-electric WC-automatic washing plant installed all freshwater engine-cover side Windows above and the bathroom porthole hatch 2019-Jobs changed-lazy bag new-replaced exhaust WC-new halyards and sheets-elastic tops new mooring-replaced all engine mounts (originals Yanmar)-volvo estate-fitting tool changed pit for temperature detection engine-new aluminum engine instrument panel-change drawer freezer door hinges-all new-new steel flange blocks for trasto randa-polishing Hull-cover cockpitable new

Instrumentation

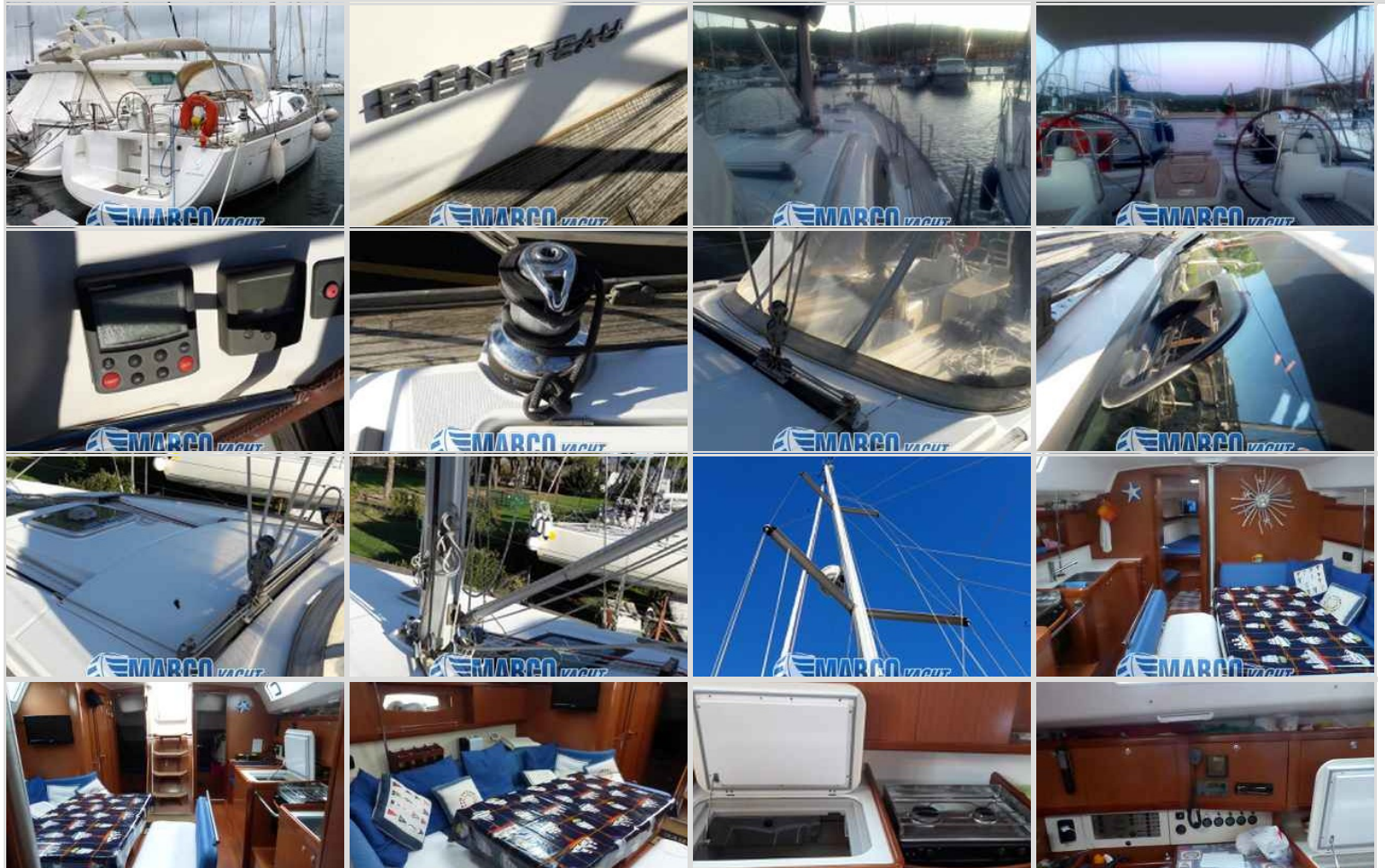
Electronic equipment raymarine gps chart plotter and latest generation-9-autopilot-ecoscandaglio-vhf with dsc-radar chain counter-antenna tv-tridata wind station -

Further information

Interior design nauta-Spanker-teak deck with cockpit, benches and teak luxury version-the icebox and refrigerator in cockpit-white hull-spray hood and bimini top-external shower mixed-bathing ladder-full optional-bow thruster max pow ER-tender, 2 hp motor delta anchor, chain of 30 10 50 mt + mt textile-contametricatena quick silver-again-webasto heating 2015-very well equipped-ready to buoy-electronic inverter stabilized-handle electrified adaptable for all winches -

The particulars are believed to be correct but not guaranteed

Photos Beneteau Oceanis 43





Beneteau Oceanis 43

